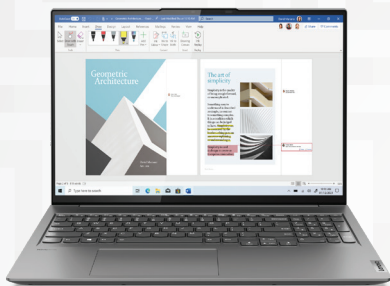


YOGA SLIM 7 PRO (16")

POWER TO THE PIXEL.

Unlock pure, unstoppable power with the Yoga Slim 7 Pro. This incredibly compact, ultra-thin laptop packs a 120 Hz touchscreen, the advanced architecture of AMD Ryzen™ 5000H series processors and NVIDIA®'s world-beating RTX 3050 graphics. The QHD 16:10 display features 100% sRGB color accuracy and ultra-thin bezels on a huge 16" screen, giving you some crucial added work space.

WHY YOU SHOULD BUY THE LENOVO YOGA SLIM 7 PRO (16")



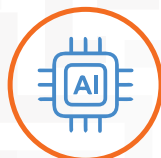
Ultimate performance. Uncompromised battery life.

They say life is full of compromises. They say that a high-performance laptop has to be big and bulky. With the world's most advanced mobile processor technology, AMD Ryzen™ 5000 H-Series Mobile Processors brings up to 8 cores in a 80W TDP powerhouse, so you can enjoy elite performance on a premium laptop with amazing battery life*. Never compromise on your laptop again.



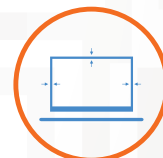
Transport your visuals to a higher realm

Designed for extensive creative sessions, the pristine QHD IPS touchscreen display runs seamless visuals in smooth motion with a rapid 120 Hz refresh rate. Enable massive productivity with the 16:10 increased usable screen size, and view it all with true-to-life 100% sRGB color accuracy. Work, game and watch videos in any environment on the up-to-500 nits bright display.



Optimize your user-experience with AI

More than just an ultra-slim laptop, the Yoga Slim 7 Pro is a next-generation smart personal computer that interweaves AI into an enhanced user-experience, optimizing everything from user security to power management via ground-breaking smart solutions.



Near-borderless display

Catch every sub-pixel of the Yoga Slim 7 Pro's stunning 16" 16:10 display. Framed by razor-thin borders and only 3.9 mm bezels at the top and sides of the display. Immerse yourself in a near borderless experience.



Full-sized keyboard

Type faster and with more accuracy and comfort on the precision-crafted keyboard with keys that offers faster, bouncier and more responsive typing. You'll never feel cramped when typing on this generously-sized keyboard featuring full-sized arrow keys.

* As of December 2020, the Ryzen 5000 series mobile processors are the "Most advanced mobile processors", defined as the highest-performing single-thread and multi-thread performance available on x86 mobile processors enabled by superior 7nm manufacturing technology on a small node. C2M-26.



Lenovo

YOGA SLIM 7 PRO (16")

SPECIFICATIONS

Yoga Slim 7P 16ACH-6*

PERFORMANCE

Processor

AMD Ryzen™ 7 5800H Mobile Processor
AMD Ryzen™ 5 5600H Mobile Processor

Operating System

Windows 11

Graphics

DIS : NVIDIA® GeForce® RTX 3050
DIS : NVIDIA® GeForce® GTX 1650
UMA : AMD Radeon™ Graphics

Memory

DDR4 : 16 GB Dual Channel

Storage

SSD PCIe M.2 : 512 GB / 1 TB

Camera

IR Camera
TOF Sensor

Audio

2 x 2W Speakers with Dolby Atmos®

Battery¹ (75Whr)

MobileMark® 2018 : Up to 12.5 Hours
Local Video Playback: Up to 16.5 Hours
Rapid Charge Boost : 15 min / 3 Hours

DESIGN

Display

16" 2.5K (2560 x 1600) IPS, 16:10, 100% sRGB, 500 nits, 120 Hz, 92% AAR
16" 2.5K (2560 x 1600) IPS, 16:10, 100% sRGB, 400 nits, 60 Hz, 92% AAR
TÜV LBL Eyesafe® + Eye Comfort, SGS
Vesa Certified DisplayHDR™ 400

Dimensions (W x D x H)

(mm) : 356 x 246 x 17.4-19.9
(inches) : 14" x 9.7" x 0.69"-0.78"

Weight

Starting at 2.1 kg (4.6 lbs)

Hinge

150°

Color

Cloud Grey
Storm Grey

WOW FEATURES

Standard

Alexa²
Lenovo Smart Assist³

CONNECTIVITY

WLAN

2x2 WiFi 802.11 ax

Bluetooth®

Bluetooth® 5.1

Input/Output (I/O) Ports

1 x Square DC-In⁴
1 x USB Type-C™ (full function)
1 x USB Type-C™ (PD + USB 2.0)⁵
2 x USB-A (USB 3.2 Gen 1)⁶
1 x SD Card
1 x HDMI™ 1.4b
1 x Audio Jack

PRELOADED SOFTWARE

- Lenovo Vantage
- Microsoft Office 2021
- McAfee® LiveSafe™
- Alexa²

¹ All battery life claims are approximate and based on two methods of testing: MobileMark® 2018 battery life benchmark and continuous 1080p video playback on the latest update of Windows 10 (with 150 nits brightness and default volume level). Actual battery life will vary and depends on many factors such as product configuration and usage, software use, wireless functionality, power management settings, and screen brightness. The maximum capacity of the battery will decrease with time and use.

² Available in select regions.

³ Lenovo Smart Assist: Smart Display (Glance notifies you when someone's reading over your shoulder); Smart Player (video pauses when you walk away); ITS 4.0 (Q-Control) battery optimization; instant bootup.

⁴ Only available on DIS variant.

⁵ Only available on UMA variant.

⁶ The actual transfer speed of the USB 3.2 will vary and, depending on many factors, such as the processing capability of host and peripheral devices, file attributes and other factors related to system configuration and your operating environments, will be slower than a speed of 20 Gbit/s.



OPTIONS & ACCESSORIES



Lenovo Yoga Mouse with Laser Presenter



Lenovo Yoga Active Noise-cancellation Headphones



Lenovo Yoga Sleeves

LENOVO SERVICES*

Lenovo Premium Care

Premium Care is the hassle-free solution for all your technical support needs. Upgrade your standard warranty with our front-of-the-queue customer support service and get 24/7 real-person support from experts who provide solutions on your first contact.

Lenovo Smart Performance

Smart Performance Services within Lenovo Vantage will keep your system running at optimum performance and proactively fix issues that affect PC performance, internet performance, and security.

Lenovo Accidental Damage Protection

Avoid the hassles of unexpected damage & repair costs. With coverage for drops, spills, electric surges, and broken LCD screens, accidental damage protection makes it easy to repair to your PCs and ensures your device is up and running fast.

Lenovo Warranty Extensions (1-to-3 Years Duration)

Gain complete peace of mind by extending your warranty to minimize unexpected expenses and repair costs.

* The availability of the services would vary from markets to markets.

* Example of Lenovo marketing naming convention

Yoga	Slim	7P	16	ACH	6
Sub-brand	Series	Position	Screen size or volume (litre)	Platform (e.g. ABM = Beema)	Generation

AMD platform codes

Bristol Ridge-L: ABL, Beema: ABM, Bristol Ridge: ABR, Carizzo-L: ACL, Carizzo: ACZ, Godavari: AGR, Kaveri: AKV, Stoney Ridge: ASR, Stoney Ridge: AST (NB), Summit Ridge: ASU, Raven Ridge: ARR, Picasso: API, Ryzen: ARE, Dali: ADA, Matisse: ARH, Cezanne H: ACH.

WWW.LENOVO.COM

Lenovo reserves the right to alter product offerings and specifications at any time, without notice. Lenovo makes every effort to ensure accuracy of all information but is not liable or responsible for any editorial, photographic or typographic errors. All images are for illustration purposes only. For full Lenovo product, service and warranty specifications visit www.lenovo.com. Lenovo makes no representations or warranties regarding third party products or services. ©2021 Advanced Micro Devices, Inc. All rights reserved. AMD, the AMD Arrow logo, Athlon, Radeon and combinations thereof, are trademarks of Advanced Micro Devices, Inc. Microsoft and Windows are registered trademarks of Microsoft Corporation in the United States and/or other countries. 3DMark is a registered trademark of Futuremark Corporation. Other names are for informational purposes only and may be trademarks of their respective owners. Other company, product and service names may be trademarks or service marks of others. Visit www.lenovo.com/lenovo/us/en/safecomp/ periodically for the latest information on safe and effective computing. ©2021 Lenovo. All rights reserved.



Lenovo